



Philadelphia Scientific®
industrial battery innovation

HydroCart Max - DC



20 Gallon Water Supply for the
Water Injector System™

Model: INJ-739



HEALTH AND SAFETY PRECAUTIONS



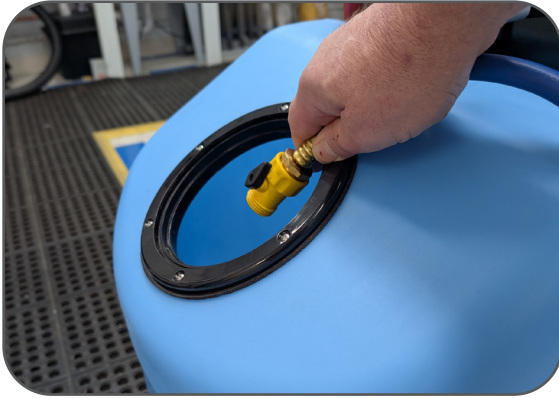
**Batteries contain sulphuric acid, always wear approved protective clothing (gloves, goggles & apron).
Secure the load before moving unit.**

Use only with a 24V Battery. Minimum capacity of 750 Ah.

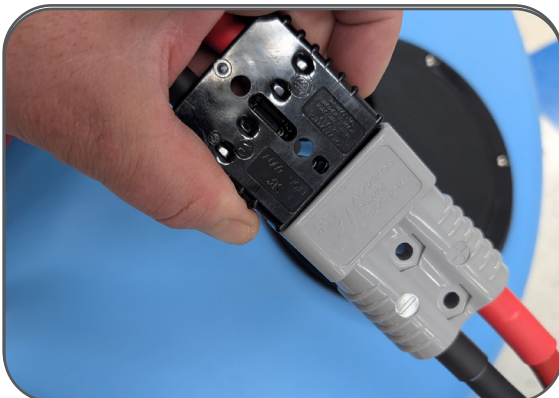
Set Up



Carefully remove the unit from the shipping carton.



Open the lid. Remove packing material from the tank. Fill the tank to the desired level with deionized water.



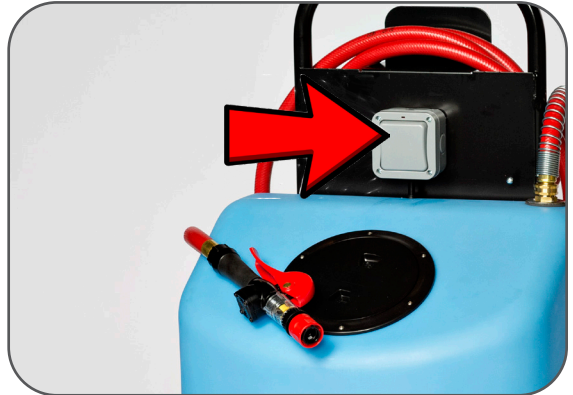
Connect SB175 from Inverter to the battery in the pallet rider truck.

It is highly recommended to install an Anti Static Ground Strap on the truck used to move and power the HydroCart Max - DC.

Move the switch on the inverter to the On position.



Turn the switch on to operate.



Connect the Instant Valve Pro™ to the Input Assembly of the Water Injector System installed on the battery.



Squeeze the lever completely to fill the battery.

Do Not Partially Squeeze the Lever.



Watch the spinner mounted on the Instant Valve Pro. When it stops spinning, the filling is completed (about 15 seconds, usually). Note: The spinner may not come to a complete stop, especially in larger systems. The battery is filled when the spinner slows enough to clearly see the inner blades/vanes.

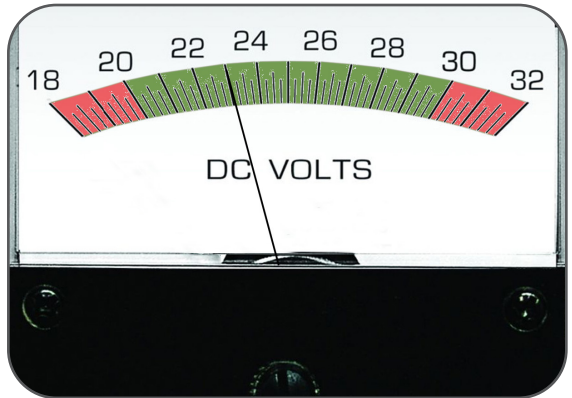
Release the lever.
Disconnect the Instant Valve Pro from the Water Injector System.



When filling operations are complete, turn the inverter off and store the red output hose.



NOTE: Inverter will shut off when battery voltage reaches 20 VDC. If this occurs, fully charge the battery before the next use.



Just a reminder: the HydroCart Max - DC can be still powered with A/C; use a 12-gauge extension cord to the nearest 110 VAC outlet.



Philadelphia Scientific LLC
207 Progress Drive
Montgomeryville, PA 18936
P: 215.616.0390 www.phlsci.com