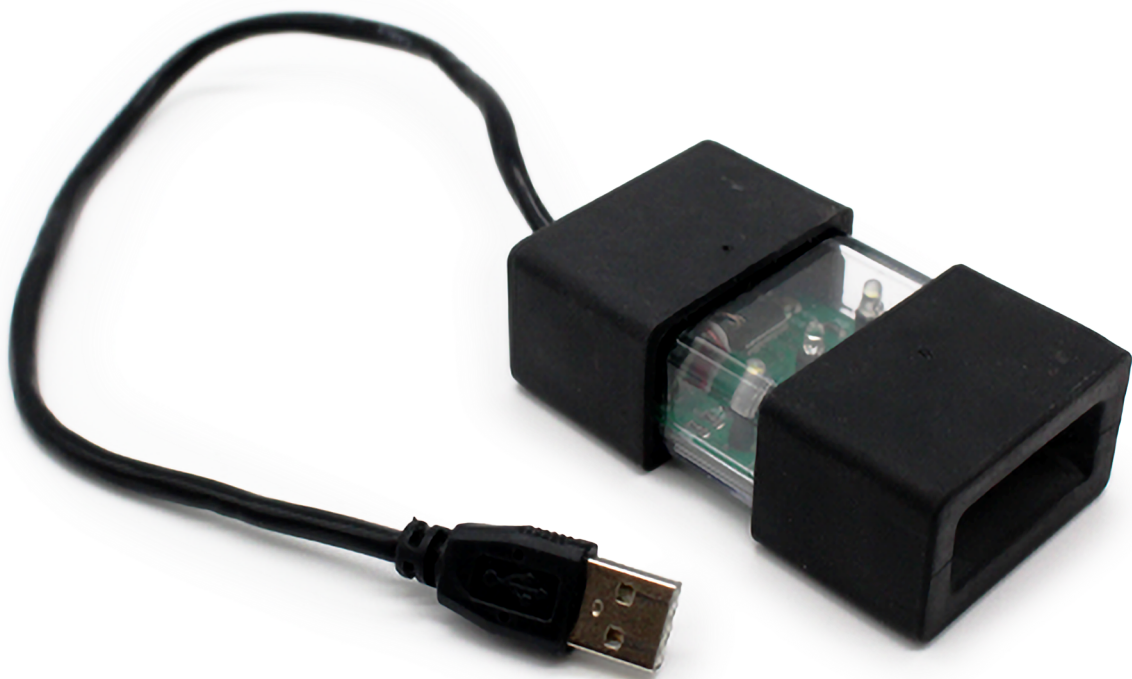


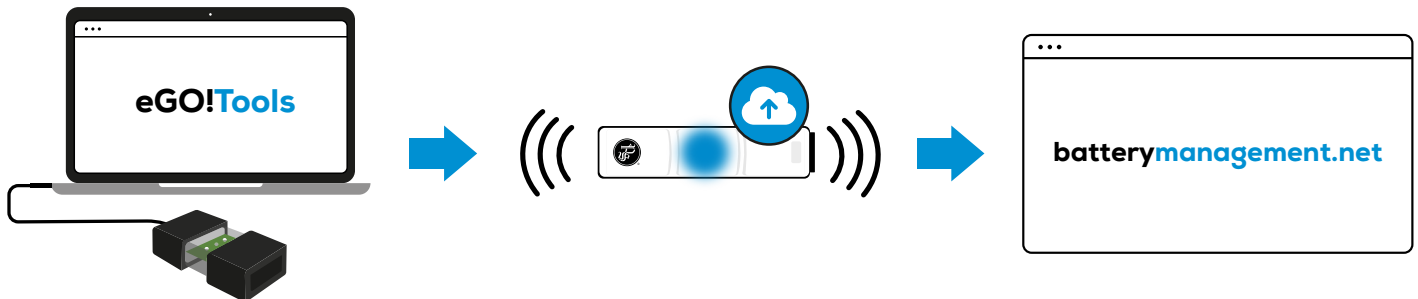
OWNER'S MANUAL

iHUB-EGO-RK



OVERVIEW OF DATA UPLOAD PROCESS

Figure 1: Data upload process via eGO!Receiver™ to batterymanagement.net



Step 1

Open [eGO!Tools](#) webapp & connect eGO!Receiver to your PC.

Step 2

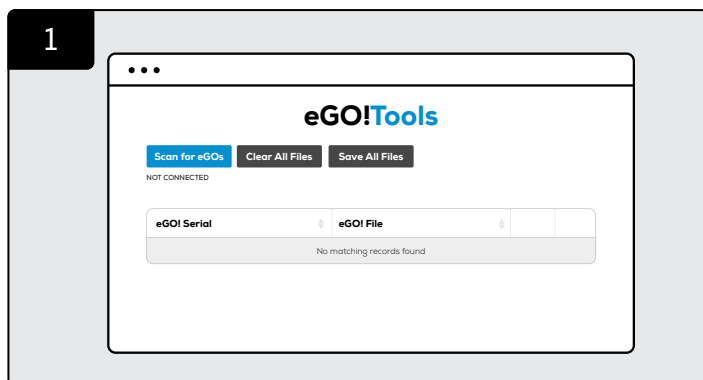
Trigger data download from eGO!Pro™. Save the data via [eGO!Tools](#) to your PC.

Step 3

Upload data from your PC to [batterymanagement.net](#)

***If you don't have online network on site, please refer to the section: [For Offline Use.](#)**

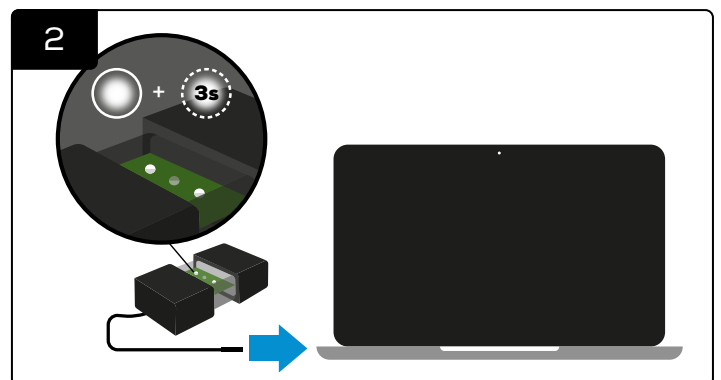
STEP 1: DOWNLOAD DATA FROM EGO!



Go to eGO!Tools webpage:

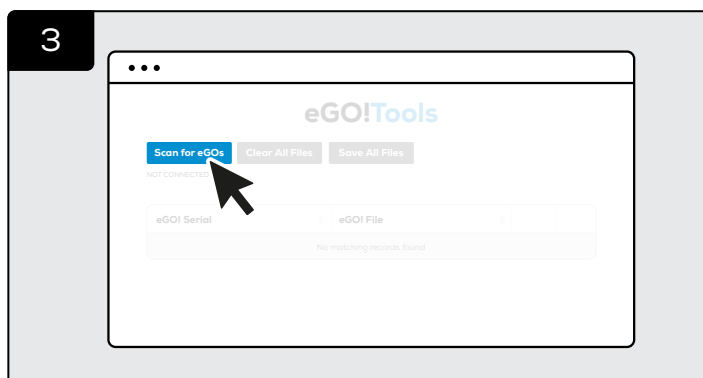
<https://batterymanagement.net/egotools>

OR open the eGO!Tools app on your PC (for offline use).



Connect eGO!Receiver to your PC.

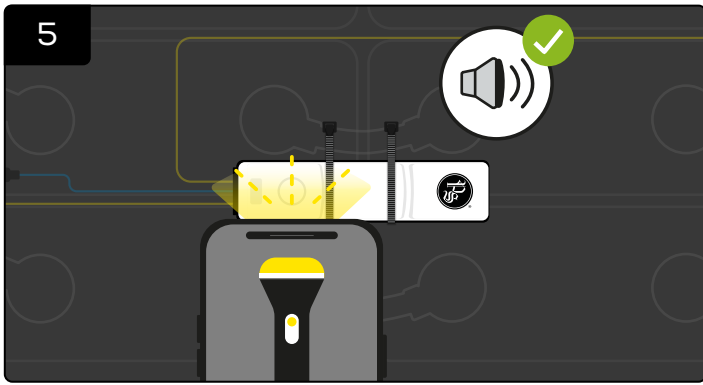
***If it connects successfully, the LED on eGO!Receiver will illuminate with one solid white LED and one flash white for 3 seconds.**



When the two white LEDs on eGO!Receiver illuminate, click **'Scan for eGOs'**, then **select eGOs serial port**.

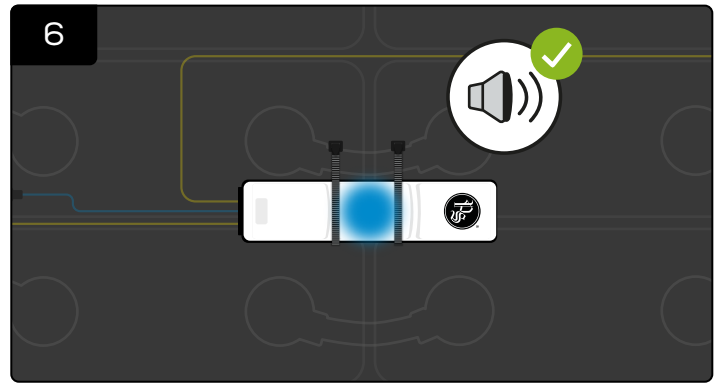


If the flashing white LED becomes solid (2 solid white LEDs), the eGO!Receiver is successfully connected to the eGOs serial port.



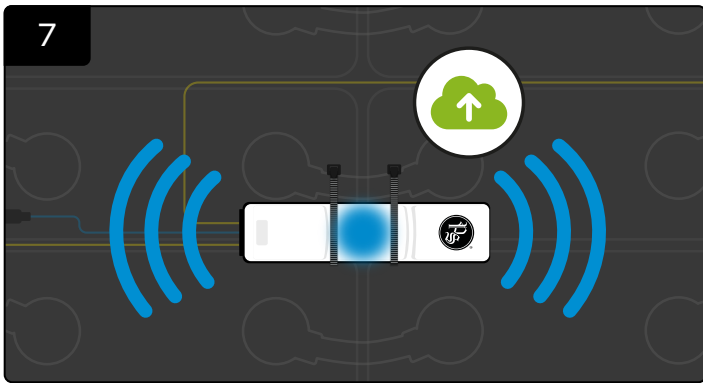
Take a bright flash light (*A mobile phone flash light will be adequate) and place directly on **top of the white circle on eGO!Pro** until you hear a beep along with blue LED.

(*Note: A flash light may not work under very bright sunlight. You must shade the unit for at least 5 seconds, then use the light source to activate the manual upload.)

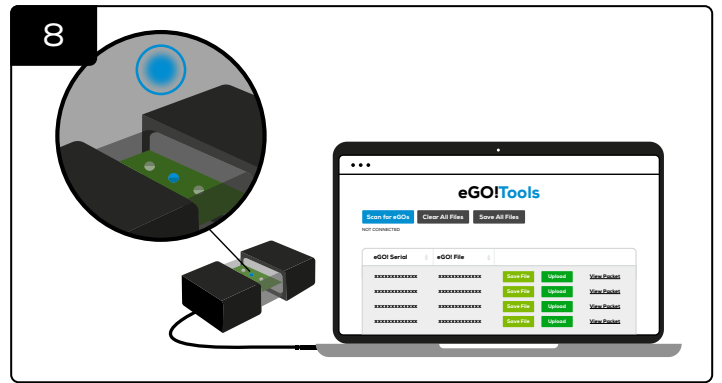


At this point quickly remove the flash light and you should hear a second beep.

*If the second beep is not heard, then the sequence will need repeating, allowing for a 3-second reset period before the next attempt.

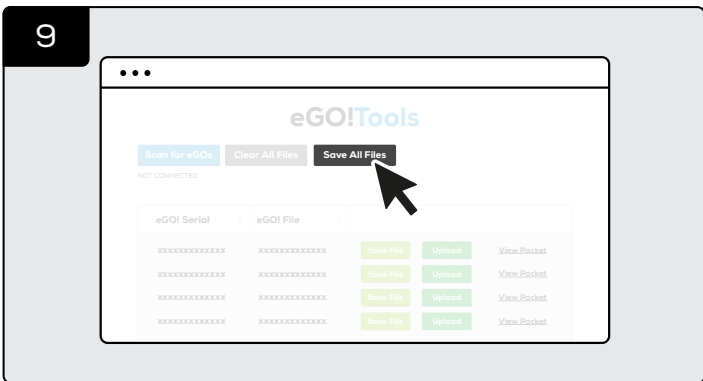


The radio is now enabled, and the blue LED remains illuminated until all data has been transmitted.

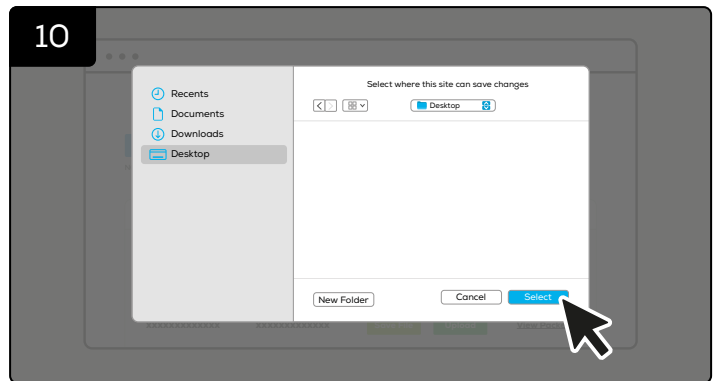


If data uploads successfully to eGO!Tools, blue LED will also illuminate on eGO!Receiver. eGO! data packets will appear in the list, along with voltage logs.

STEP 2: SAVE DATA VIA EGO!TOOLS

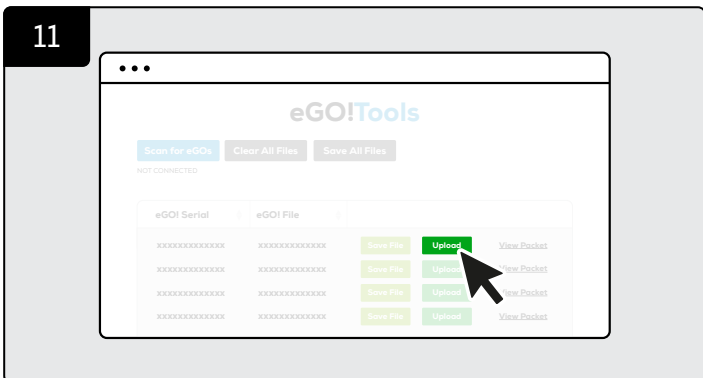


Click 'Save All Files' on eGO!Tools.

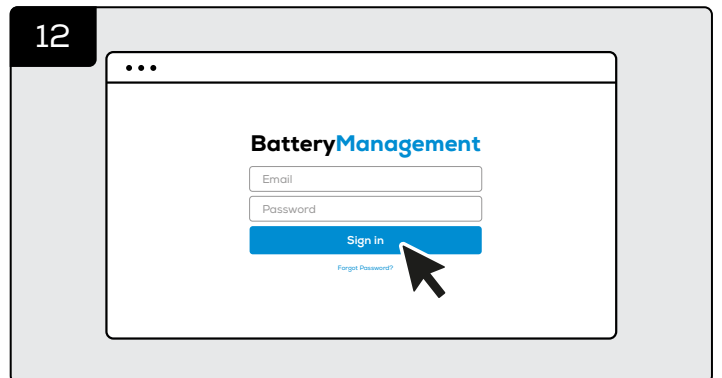


Save the files to your PC.

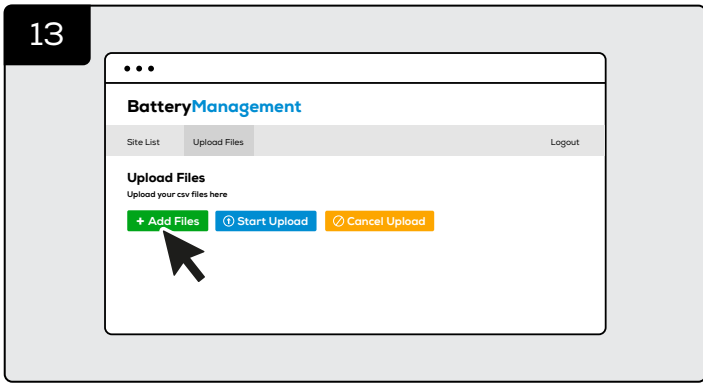
STEP 3: UPLOAD DATA TO BATTERYMANAGEMENT.NET



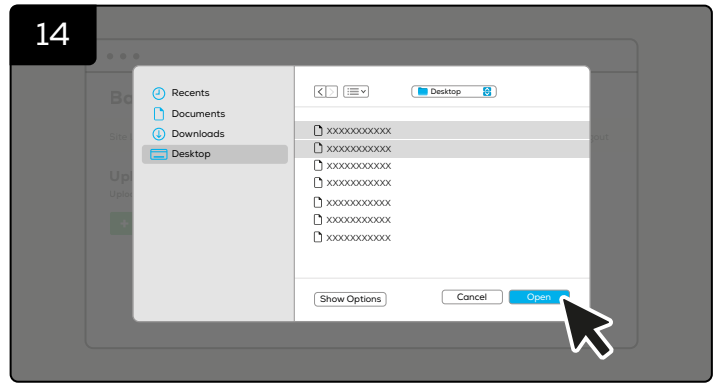
Click 'Upload' on eGO!Tools.



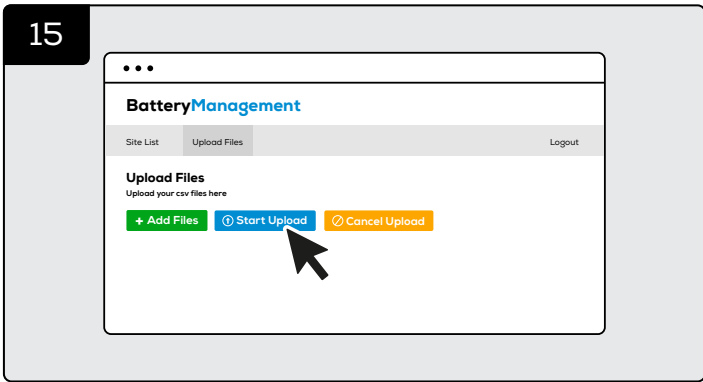
You will be directed to batterymanagement.net Login with your account details.



Click '+ Add Files'.

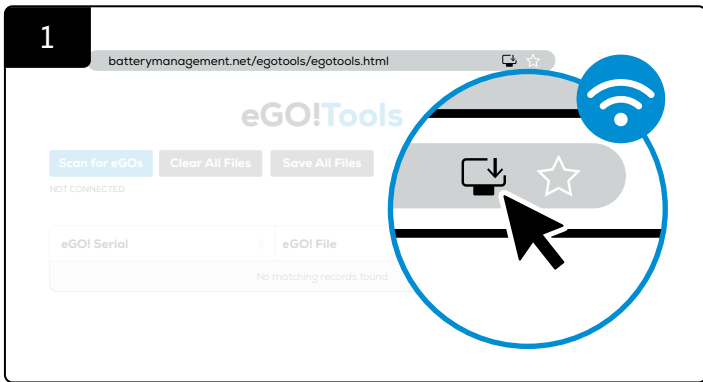


Select all downloaded files from your PC.

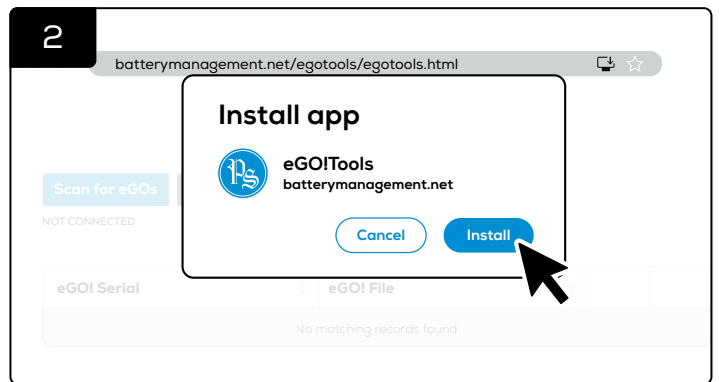


Click 'Start Upload' to sent the data.
All data is now able to access online via batterymangement.net.

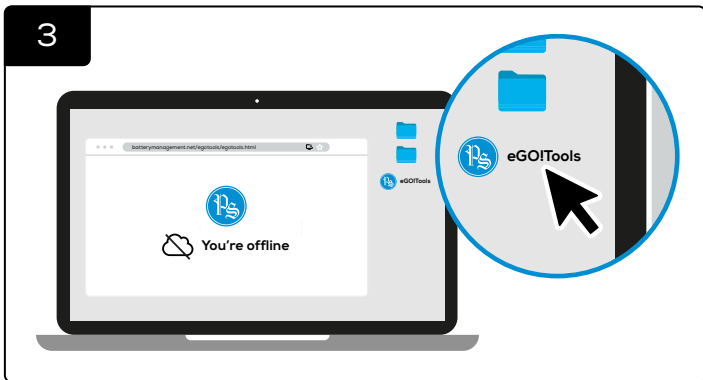
FOR OFFLINE USE: DOWNLOAD EGO!TOOLS™ APP ON DESKTOP



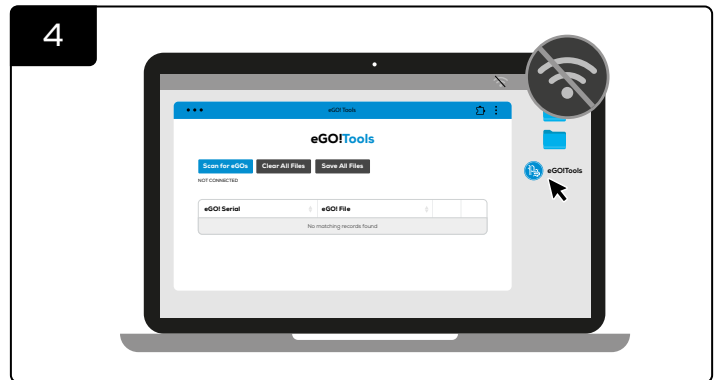
Go to eGO!Tools webpage:
<https://batterymangement.net/egotools>
Download the web app - eGO!Tools to your desktop when you have online connection.



You will be asked if you wish to install the eGO!Tools app.
Download it to your desktop.



The app will appear as an icon on your desktop.



It can be used offline to download data from eGOs.



**FOR PRODUCT SPECIFICATIONS, USER GUIDES
AND FURTHER INFORMATION PLEASE VISIT:**

<https://www.phlsci.com/product-lines/battery-performance-monitors>

DOC0615© 2025 Philadelphia Scientific UK Ltd. All Rights Reserved. Philadelphia Scientific and the PS logo are registered trademarks of Philadelphia Scientific LLC. eGOI, eGOITools and eGOIReceiver are trademarks of Philadelphia Scientific UK Limited. E&O.E. R5-130125



WWW.PHLSCI.COM

Philadelphia Scientific LLC
P: +1 (215) 616 0390
E: info@phlsci.com

Philadelphia Scientific EMEA
P: +44 (0) 1204 467777
E: info@phlsci.co.uk

Philadelphia Scientific ASIA PACIFIC
P: +61 (2) 8004 2447
E: info@phlsci.com.au

